

CERTIFIED LAND CORNER RECORDATION

DESCRIPTION OF CORNER EVIDENCE FOUND, AND ORIGINAL RECORD (If known)

	10	11
T.	15	14
N.		R.60W.

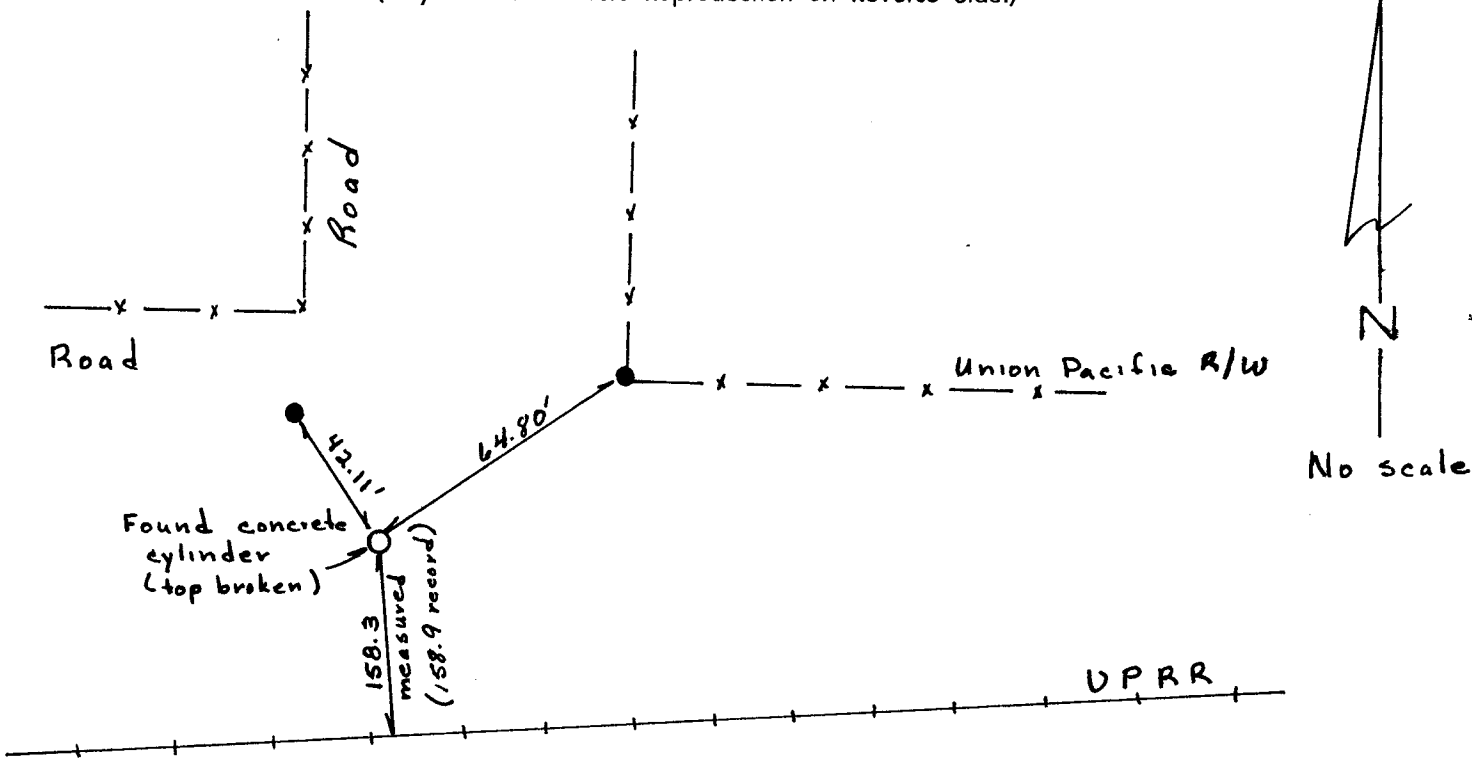
Found concrete cylinder with top broken off,
158.3' center from UPRR track.

DESCRIPTION OF MONUMENT AND ACCESSORIES ESTABLISHED
TO PERPETUATE THE ORIGINAL LOCATION OF THIS CORNER:

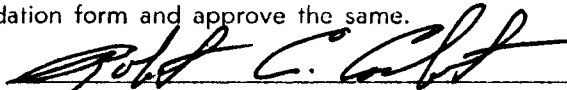
Set 40d nail in east face power pole
lying northwest of corner - 42.11'

Set 40d nail in east face power pole lying
to northeast of corner - 64.80'

SKETCH, WITH COURSE AND DISTANCE TO ADJACENT CORNER IF DETERMINED IN THIS SURVEY.
(May Sketch or Paste Reproduction on Reverse Side.)




I, Robert C. Corbet, L.S. #495 certify that I have carefully performed or reviewed the work done on the diagrammed corner as reported on this recordation form and approve the same.


 Signature of Surveyor L.S. 495
Registration No.

STATE OF WYOMING,
Office of Clerk and Recorder,
County of Laramie

778080

This "corner record" was filed for record on the FEB 6 1985 day of 19, was noted on the cross-index plat and is assigned page No. _____, in book No. _____.


 County Official

Cross Index No. _____	T. _____	R. _____	Mer. _____
_____	T. _____	R. _____	Mer. _____
_____	T. _____	R. _____	Mer. _____
_____	T. _____	R. _____	Mer. _____
_____	T. _____	R. _____	Mer. _____
_____	T. _____	R. _____	Mer. _____
_____	T. _____	R. _____	Mer. _____

J17 T14 R60